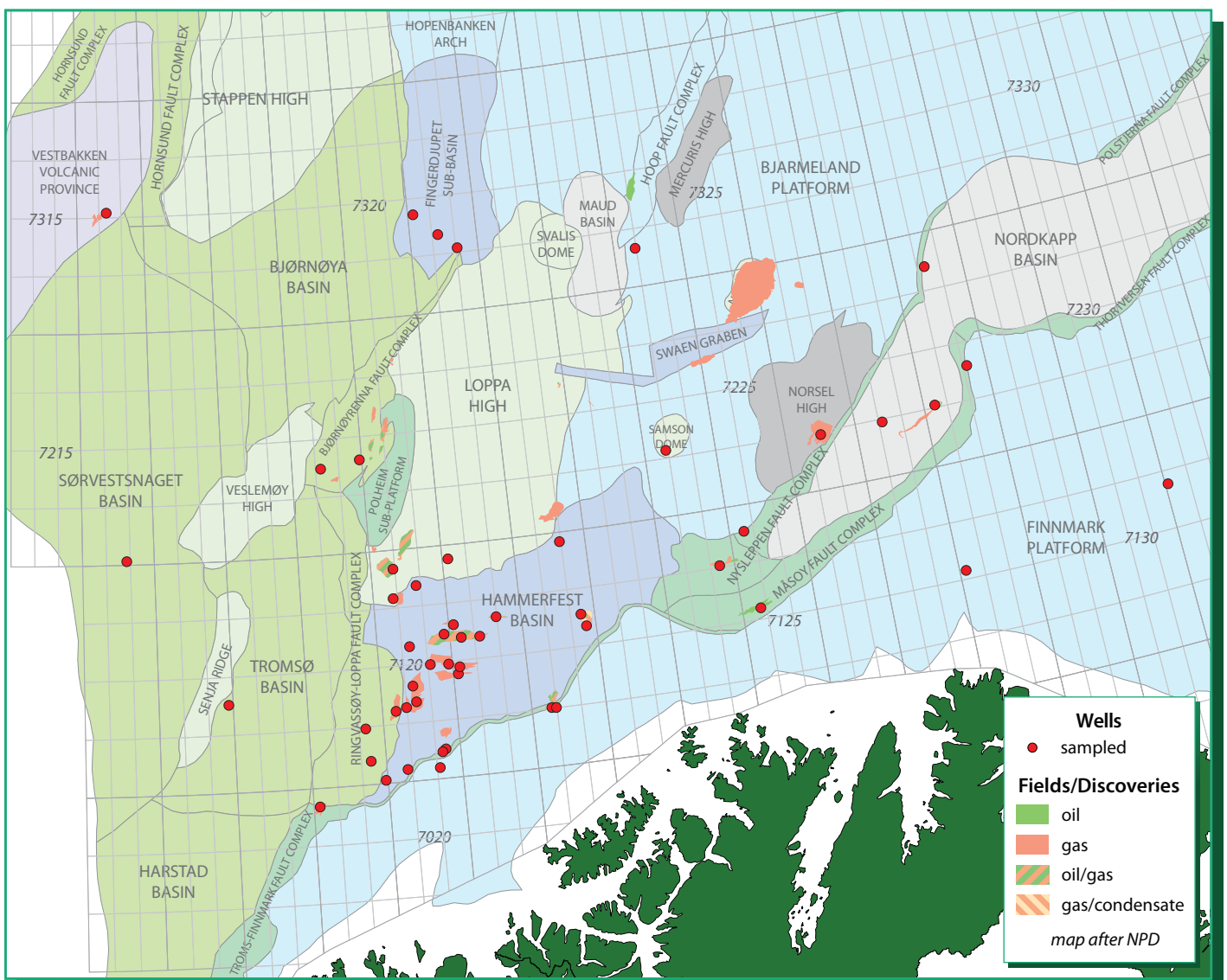


09/  
1941

# Database of Composition & Isotopic Ratio Data for Tested Gases Headspace/Occluded gases: Norwegian Barents Sea



- Database of all open-file gas data available from NPD website
- Fully QCed data from 84 wells – as listed overleaf
- Comprises 82 test, ~4000 headspace and ~300 occluded gas samples
- Comprehensive evaluation of sources, migration, maturity and alteration of hydrocarbons & CO<sub>2</sub>
- Evaluation of modes of formation of accumulations and influence of regional tectonics
- Evaluation of headspace and occluded gas trends in individual wells
- Includes Excel spreadsheet of all compositional data



APT is a commercial company offering high quality analyses and consultancy services to the oil industry within the fields of petroleum geochemistry, biostratigraphy and production monitoring

APPLIED PETROLEUM TECHNOLOGY AS  
Postboks 123, 2027 Kjeller, Norway  
www.aptec.no

Telephone: +47 9349 7038  
Fax: +47 6380 1138  
email: nm@aptec.no

## Sampled wells



Well	Test	Headspace	Occluded
7019/1-1	4	10	-
7117/9-1	-	59	59
7119/12-1	-	143	88
7119/12-2	-	84	91
7119/12-3	2	99	100
7120/1-1	2	-	-
7120/1-2	1	-	-
7120/2-2	1	57	57
7120/5-1	1	54	54
7120/6-1	1	67	67
7120/7-1	1	162	163
7120/7-2	2	96	96
7120/8-1	4	139	144
7120/8-2	2	51	52
7120/9-1	1	33	33
7120/9-2	-	44	-
7120/10-1	-	24	24
7120/12-1	-	188	191
7120/12-2	1	164	-
7120/12-4	-	18	-
7121/1-1	-	282	282
7121/4-1	4	72	72
7121/4-2	4	85	85
7121/5-1	4	105	109
7121/5-2	1	112	112
7121/7-1	3	48	50
7121/7-2	1	-	-
7122/2-1	1	80	65
7122/6-1	11	77	-
7122/6-2	3	26	2
7122/7-3	1	44	-
7122/7-4 S	-	30	-
7124/3-1	3	72	75
7125/1-1	1	55	33
7125/4-1	7	20	-
7128/4-1	5	-	-
7131/4-1	-	20	5
7216/11-1 S	-	27	-
7219/8-1 S	-	252	251
7219/9-1	-	134	134
7224/7-1	2	-	-
7226/11-1	4	53	53
7227/11-1 S	-	10	-
7228/2-1 S	-	146	147
7228/7-1 A	1	-	-
7228/9-1 S	1	-	-
7316/5-1	2	136	109
7321/7-1	-	278	-
7321/8-1	-	150	151
7321/9-1	-	139	134
7324/10-1	-	69	69