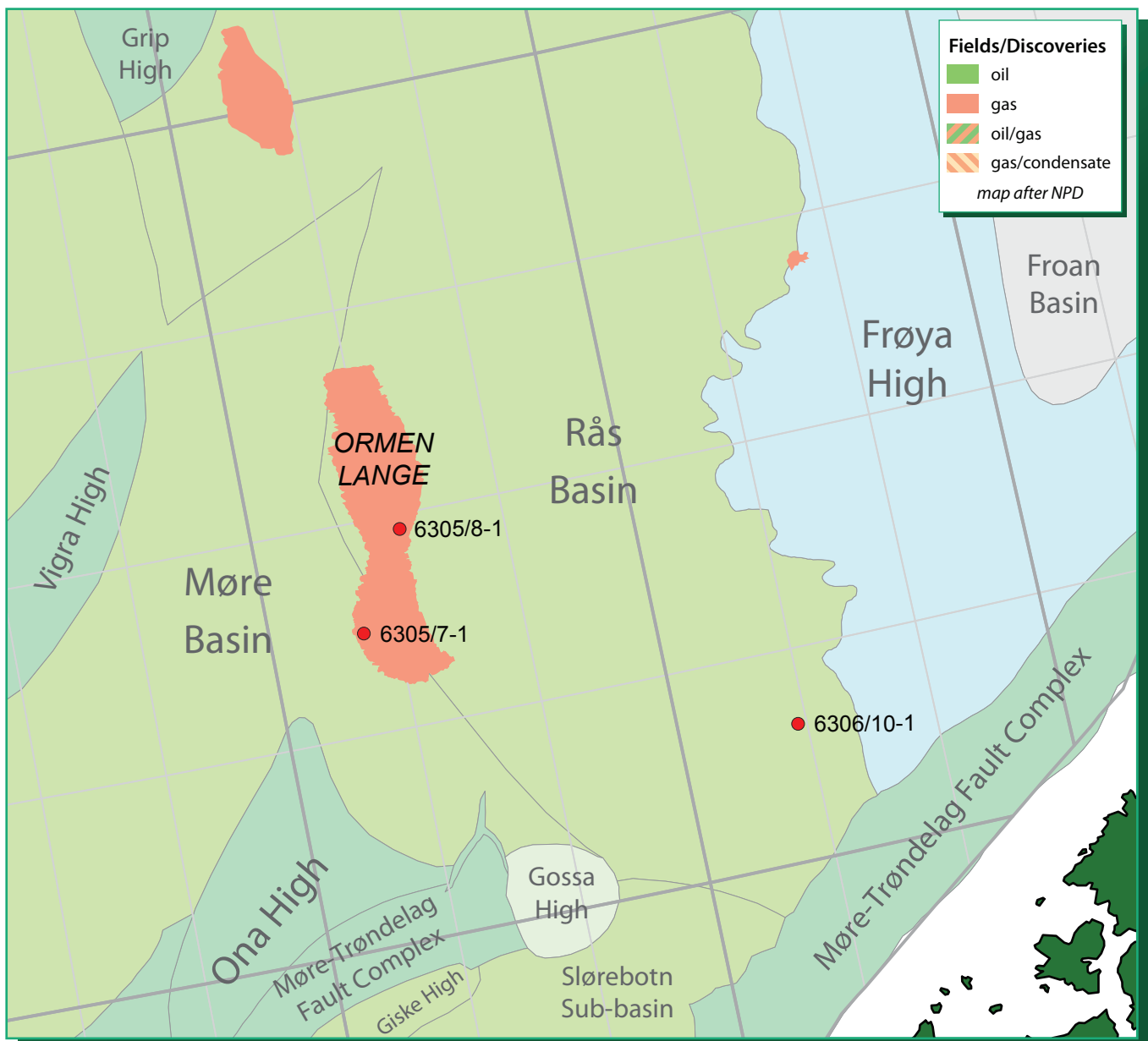


A geochemical comparison: data from 6306/10-1 and Ormen Lange

Comparison of liquids and core extracts from Ormen Lange and 6306/10-1:

- compilation of public domain data for 6305/7-1, 6305/8-1 & 6306/10-1
- new APT analyses of 7 core samples from Tertiary & Jurassic sections in 6306/10-1
- evaluation of molecular & C isotopic distributions – including age diagnostic parameters



APT is a commercial company offering high quality analyses and consultancy services to the oil industry within the fields of petroleum geochemistry, biostratigraphy and production monitoring