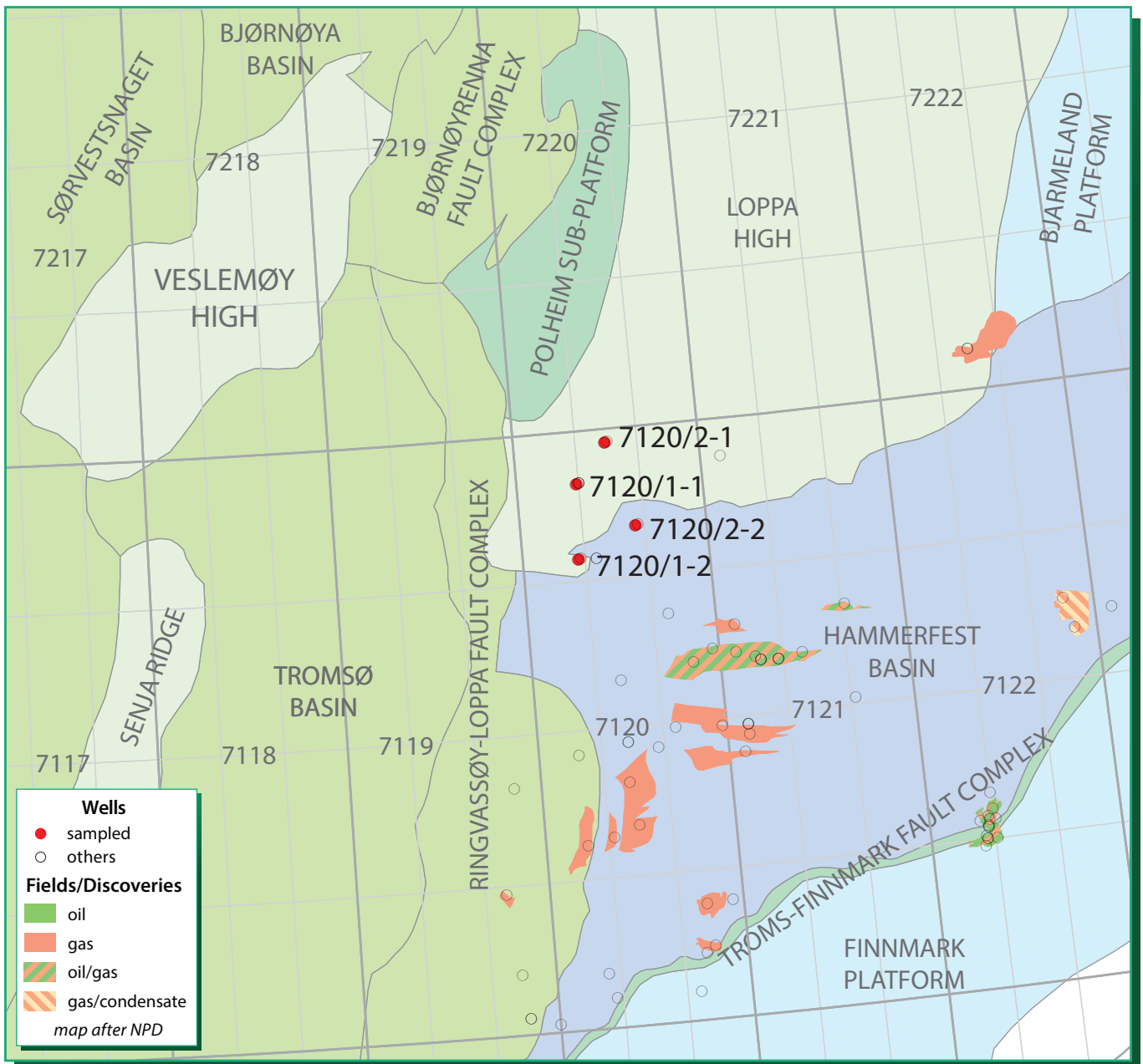


Apatite Fission Track Analyses, Loppa High Wells 7120/1-1 R2, 7120/1-2, 7120/2-1 and 7120/2-2, Norwegian Barents Sea



- High quality fission track analyses from 21 samples
- Four wells along southern margin of Loppa High – 7120/1-1 R2, 7120/1-2, 7120/2-1 & 7120/2-2
- Episodes of uplift & erosion determined from AFTA data
- Modelling of regional thermal history from combined AFTA & VR data
- Comparison of inferences with available literature studies



APT is a commercial company offering high quality analyses and consultancy services to the oil industry within the fields of petroleum geochemistry, biostratigraphy and production monitoring