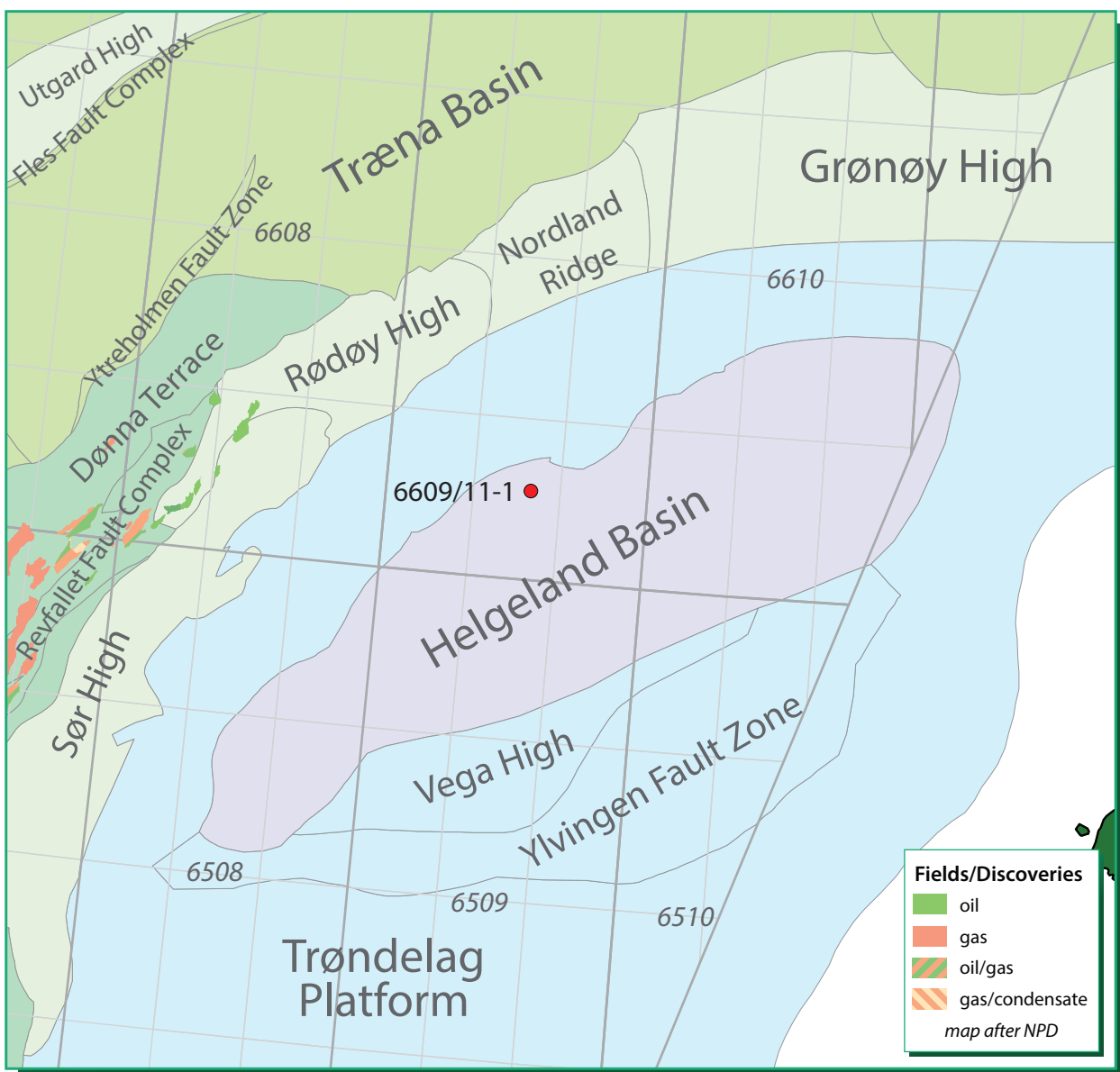


Proposed evidence for a Triassic/Palaeozoic source in the Helgeland Basin – fact, fiction or wishful thinking?

A previous proposal (Karlsen et al. 1995) that core from 2561 m in 6609/11-1 may contain oil derived from terrestrial kerogen deposited in a lacustrine setting of Triassic or Palaeozoic age is examined in greater detail with a view to reassessment of Helgeland Basin risking:

- new analyses of 5 core samples from 2560.00–2561.60 m in Tilje Fm sandstone of 6609/11-1
- GC, GC-MS, GC-IRMS of *n*-alkanes and SARA fraction $\delta^{13}\text{C}$ analyses
- biomarker & isotopic implications for source, depositional environment and age
- comparison with APT data for Haltenbanken oils & published data for Palaeozoic source rocks from Greenland



APT is a commercial company offering high quality analyses and consultancy services to the oil industry within the fields of petroleum geochemistry, biostratigraphy and production monitoring